

# Athesi

Smartphones & Tablets

A french brand



## Athesi, a product range adapted to all sectors of activity

Food manufacturing Maintenance  
Smart Industry Real Estate Automotive  
Government Transportation and Logistics  
Emergency services Electric services Energy  
Army Manufacturing Police Civil engineering  
Engineering Warehouse Management Financial  
Defence Public safety Construction Pharmaceutical  
Catering Field Operations Oil & Gas Telecoms  
Distribution Healthcare Logistics Public Sector  
Retail Services Utilities Hospitality Security

## Athesi, international distribution



## Production Certifications





## About Athesi

Founded in 2005, Athesi is a French company with head office in Bry Sur Marne near Paris. Team members are experts With more than 30 years' experience in automatic identification and professional mobility market.

Through its brand, Athesi offers a complete range of rugged products for professionals: Hand help and vehicle mount terminals, rugged smartphones, rugged tablets, industrial laptops and all business accessories specially adapted to field conditions of use, as well as barcode and RFID scanner.

Specialist on solutions for mobile professional users, Athesi makes every effort to ensure products meet business requirements as closely as possible by placing end users at the heart of its concerns.

Focused on its know-how as a hardware designer high technologies products, Athesi go to market is channel via partners.

Athesi network of international partners, leaders in mobile computing and integration with pre and post-sales technical support, provides comprehensive support adapted to each client project.

Athesi products are distributed throughout Europe Middle East Africa and Canada.

 **We want to make users life easier...**

Listening to the needs of its customers and drawing on its experience, Athesi regularly develops new products.

Leader in the professional mobility market, the main mission of Athesi is to offer a very complete range of products and associated services aimed at increasing the efficiency and productivity of its customers. Athesi thus offers products with technologies to manage all types of business applications in the fields of mobility, traceability and data collection.

Athesi supports its customers in their digital migration with a unique offer of customizable materials that meet all user needs. Athesi has always been an independent company with equity capital. The profits are reinvested as a priority each year in research and development guaranteeing strong sustainability of this French company on the national and international position.

All Athesi products are repaired in Athesi-approved repair centers at our certified maintenance distributors in Europe, Middle East and Africa.



# La FRENCH TECH



# Athesi, A whole range of product

Athesi offers several very complete ranges of products matching the needs of small, medium and large national or international companies.

Athesi products are suitable for all vertical markets that need rugged mobile devices, whatever their application. Customers can find the product that best meets their operational and financial requirements.

Because customers' needs are different and each customer is unique, Athesi designs and offers a wide range of products with differences such as hardness levels, service times, prices, accessories, upgradable, customization etc...

The product offer is declined as follows:



## The Athesi Professional range

- Rugged smartphones and tablets
- Bundled configuration
- High quantity available on stock
- The best prices
- Product life cycle minimum 2 years
- 2-years standard warranty



## The Athesi E-Serie range

- Rugged light and thin products
- Barcode scanner built-in optional
- High quantity available on stock
- Product life cycle minimum 3 years
- 3-years service contract



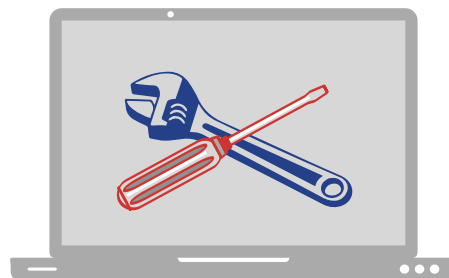
## The Athesi R-Serie range

- High-level rugged and professional products
- The best-performance products
- High level of flexibility for configuration customization
- A very wide choice of business accessories
- Product life cycle minimum 5 years
- 3 to 5 years service contracts



## The Athesi VMT, Panel PC and industrial Laptop range

- Vehicle or fixed Mount solutions
- Industrial design
- Product life cycle minimum 3 years
- 3 to 5 years service contract



## The Athesi Software tools range

- Fleet Management
- Mobile device Management
- Mobile Application Management
- Mobile Content Management
- Remote control
- Kiosk builder





## Support department

Athesi provides free dedicated support department to help you to make the best use of its products. The Hotline answers all questions and, as far as possible, helps to avoid a product return by providing the necessary support on line. This support is available for pre-sales and post-sales requests.



## Customization department

Depending on project range, the «customization» department analyses the potential modifications and adaptations of the hardware and OS or firmwares. This department is also offering tailor-made solutions for specific factory processes (installation of masters, custom packaging, labelling, etc.) to optimize the supply chain and save time and money.

## Repair department

Athesi European Services Centers for repairs are in France & Italy. Athesi is highly committed to ensure a high level of service and a well-managed lead time. Service Centers are composed by a team of engineers and specialized technicians, to be able to do any kind of repair. The after-sales staff is in permanent link with R&D, which allows a permanent qualitative evolution of the products. Athesi offers a range of standard or tailor-made service contracts to satisfy all requirements depending on the sector.



## Logistic department

Athesi has large quantity of products available in stock in order to ensure short delivery time. Alike, a large quantity of spare parts enables us to offer an optimal quality of service and to commit deadlines for maintenance services. As soon as device is dispatched, a realtime tracking number is issued.

## AP5501



## AP5706



## AP5705S



<b>OS</b>	Android 13 GMS	Android 11 GMS	Android 10 / Android 12 AER - GMS
<b>Dimensions</b>	158,2x76,7x14,6mm	159 x 79.4 x 18 mm	159.4x77.7x13.7 mm
<b>Weight</b>	234g	325g	275g
<b>Display</b>	5,45" HD+ IPS/G +FF 720x1440px	5.7" HD+ IPS 720x1440px 5 points multi-touch 18:9	5.7" HD+ IPS 740x1440px 5 points multi-touch 18:9
<b>Brightness</b>	450 nits	400 Nits	540 Nits
<b>Connectivity</b>	802.11 a/b/g/n/ac 4GLTE	802.11 a/b/g/n/ac 4GLTE	802.11 a/b/g/n/ac 4GLTE
<b>CPU</b>	Mediatek Helio G25(MT6762G), Octa-core 2GHz Chipset	Mediatek Helio A25 MT6762 Octocore 4xCortexA53 1.8 GHz + 4xCortexA53 1.5 GHz	Mediatek Helio P22 Octocore 1.8GHz
<b>Memory</b>	4GB RAM LPDDR4X 64 GB EMMC (TF 128GB)	4GB RAM LPDDR4X 64GB EMMC (TF 128GB)*	4GB RAM LPDDR4X 128GB EMMC (TF 128GB)
<b>Camera</b>	Front 5MP Rear 20MP	Front 8MP Rear 16.0MP+0,3MP+0,3MP	Front 13MP Rear 16MP + 8MP + 0.3 MP
<b>Barcode Reader</b>	Through camera	Through camera	1D/2D dedicated reader N6603SR
<b>Fingerprint Face scanning</b>	Facial	Embedded	Embedded
<b>NFC</b>	Embedded	Embedded	Embedded
<b>Bluetooth</b>	5.0	5.0	5.0
<b>Battery</b>	5 180mAh 5V Lithium Polymere	8580 mAh 5V Lithium-Polymer	5580 mAh 5V Lithium-Polymère
<b>USB-C Charging</b>	Yes	Yes	Yes
<b>Wireless Charging</b>	No	No	Yes
<b>Earphones Jack</b>	Jack 3,5mm	USB C	USB C
<b>Navigation</b>	GPS + GLONASS + BEIDOU + GALILEO	GPS + GLONASS + BEIDOU + GALILEO	GPS + GLONASS + BEIDOU + GALILEO
<b>Rugged Features</b>	IP68 & IP69K 1,5m drop MIL-STD-810G antibacterial	IP68 & IP69K 1.5 m Drop MIL-STD-810G	IP68 1.5 m Drop MIL-STD-810G
<b>Temperature</b>	-20°C to +60°C	-30° to +60°	From -30° to +60°
<b>IO</b>	2 nano SIM Micro SD 128GB max USB-C	2 Nano-SIM (or 1 Nano-SIM, 1 TF) Micro SD 128GB USB C	2 Nano-SIM (or 1 Nano-SIM, 1 TF) Micro SD 128GB USB C
<b>Softwares</b>	Toolbox + FM radio + sound recorder + kiosk + easy launcher	Sound Meter + Compass + Flashlight + Inclinometer + Pic + Hanging + Height Measure + Magnifier + Dictaphone + Pedometer + Plumb Bob + Protractor	Sound Meter + Compass + Flashlight + Inclinometer + Pic + Hanging + Height Measure + Magnifier + Dictaphone + Pedometer + Plumb Bob + Protractor + Barcode Datacapture and Storage
<b>Kiosk Mode</b>	Embedded	Embedded	Embedded
<b>SOS Features</b>	No	Embedded	Embedded
<b>SAR - Head</b>	0.55W/Kg	0.737 W/Kg	0.260 W/kg
<b>SAR - Body</b>	1,492W/Kg	1.322 W/Kg	0.589 W/kg
<b>SAR - Members</b>	3,114W/Kg	3.396 W/Kg	1.265 W/kg
<b>Warranty</b>	2 Years	2 Years	2 Years



## AP8001TL / AP8001CL 8" DISPLAY



## AP1001TL / AP1001CL 10" DISPLAY



## AP1002TL / AP1002CL 10" DISPLAY



OS	Android 10	Windows 10	Android 10	Windows 10	Android 11	Windows 11
<b>Dimensions</b>	220x143x14 mm		266x174,4x15,7 mm		263x177x10,5 mm	
<b>Weight</b>	650g		920g		650g	
<b>Display</b>	8" 800x1280 IPS 5 pt multi touch		10,1" 800x1280 IPS 10 pt multi touch		10,1" 1200x1920 IPS 10 pt multi touch	
<b>Brightness</b>	450 Nits		400 nits		400 Nits	
<b>Connectivity</b>	Wifi 802,11 a/b/g/n/ac HSDPA - HSUPA 3,8G/4GLTE		Wifi 802,11 a/b/g/n/ac 4GLTE		Wifi 802,11 a/b/g/n/ac 5G	Wifi 802,11 a/b/g/n/ac 4G
<b>CPU</b>	Qualc, Snapdragon 625 8 Core MSM8953 2GHz	Intel Cherrytrail QuadCore, Z8350 1,92GHz	Qualc, Snapdragon 625 8 Core MSM8953 2GHz	Intel Cherrytrail QuadCore, Z8350 1,92GHz	Mediatek MT6833 8Core	Snapdragon 7C 2,4GHz
<b>Memory</b>	4Go LPDDR3 64Go EMMC ROM		4Go LPDDR3 64Go EMMC ROM		4Go LPDDR3 64 Go EMMC ROM	8Go LPDDR3 128 Go EMMC ROM
<b>Camera</b>	Front 5MP Back 13MP AF Flash	Front 2MP Back 5MP AF	Front 5MP Back 13MP AF Flash	Front 2MP Back 5MP AF	Front 5MP Back 13MP AF	
<b>Barcode reader</b>	Through camera		Through camera		1D/2D integrated barcode reader	
<b>NFC</b>	Embedded		Embedded		Embedded	
<b>Bluetooth</b>	4,0 BLE		4,0 BLE		5,1	
<b>Battery</b>	7500 mAh 3,7V Li-Po		10 000 mAh 3,7V Li-Po		9500 mAh 3,8V Li-Po	
<b>USB-C Charging</b>	No		No		Yes	
<b>Earphones jack</b>	Jack 3,5mm		Jack 3,5mm		USB-C	
<b>Navigation</b>	GNSS GPS GLONASS		GNSS GPS GLONASS		GNSS GPS GLONASS GALILEO	
<b>Rugged Features</b>	IP67 MIL-STD-810G 1,2m drop		IP65 MIL-STD-810G 1,2m drop		IP65 MIL-STD-810G 1,2m drop	
<b>Temperature</b>	-20°C to +55°C		-20°C to +55°C		-10°C to +50°C	
<b>IO</b>	TF SD x 1 Max 128 Go Micro USB 3,0 x 1 HDMI 1,4a Type C SIM x 1 Jack Audio		TF SD x 1 Max 128 Go Micro USB 3,0 x 1 HDMI 1,4a Type C SIM x 1 Jack Audio		Support TF SD x 1 Max 512 Go USB 2,0 x 1 TG/PE SIM x 2	
<b>Softwares</b>	Accelerometer Compass Inclinometer		Accelerometer Compass Inclinometer		G sensor Geomagnetic Sensor (Compass) Gyro sensor	
<b>Warranty</b>	2 Years		2 Years		2 Years	
<b>Accessories</b>	Handstrap Power supply		Handstrap Power supply		Dock station, physical keypad, bumper, handstrap, power supply, bumper with rotative handstrap	



# Rugged Smartphones and PDA - E Series

## E40



4 GB RAM, 64 GB ROM. Multi-touch touchscreen display. Micro SD. SIM. Charging connector on base. Rear camera 13 Mpx autofocus and flash. USB Type C. 162x73x19mm. Operating from -10°C to +55°C.  
**Shipped with** : 4500 mA battery, hand strap, screen protection, USB power adapter.

Processor	OS	Display	Barcode Reader	RFID Reader	Communication	IP rating / Drops	Weight
Helio P22 (MT6762V) Cortex A53 Octo Core 2 GHz	Android 11 GMS	WVGA 480 x 800 300 Nits	1D/2D imager	HF 13,56MHz (NFC)	4G LTE, Wifi a/b/g/n Bluetooth 5.0, GPS	IP65 / 1.2m MIL STD 810G	250g

Low cost, removable battery, built-in keyboard, Android 11



Desktop dock  
AT-CAE4001



Battery 4500 mA 3,8 V  
AT-CAP4002



Holster belt clip  
CARP10010



Cigar lighter charger  
3760310040031



Power adapter USB  
AT-CASPA4302

## E50AT



E50AT Android 11 Atex Zone II. Microprocessor Mediatek Octa Core MT8768 2Ghz 64 bits, 4Gb RAM, 64 GbFlash. Display 5" HD 1280 x 720 tactile capacitive multi touch, Gorilla Glass, 500 nits, 4GLTE, GPS, Wifi 802.11 a/b/ac/g/n, Bluetooth V 5.0 BLE, NFC, APN front 5 Mpixels and rear 13 Mpixels autofocus et flash, Wlacie Talkie, Micro USB and docking connector, IP67, 1,5m drops.

**Shipped with**: Battery pack 5100 mA Snap-on charger with 1m USB 2.0 cable, hand strap, USB power adaptor, LCD protection applied.

Processor	OS	Display	Barcode Reader	RFID Reader	Communication	IP rating / Drops	Weight
Mediatek Octa Core MT8768 2Ghz 64 bits	Android 11 GMS	HD 1280x720 500 nits	Through camera	HF 13,56MHz (NFC)	Walkie Talkie,4G LTE, wifi a/b/g/n/ac bluetooth 5.0, GPS	IP67 / 1,5m MIL-STD-810G ATEX (II)	531g

An hybrid ATEX smartphone with an integrated Walkie Talkie



Dock Station  
AT-CAE50AT01



Battery pack 5100mA  
AT-CAE50AT02



Snap on charger USB  
AT-CAE50AT03



Handstrap  
AT-CAE50AT04

## E5SL



4 GB RAM, 64 GB EMMC. Rear camera 13 Mpx autofocus and flash. Capacitive multi-touch display. Optional fingerprint scanner. Micro SD. SIM. USB-C and docking connector. POGO PIN. Accelerometer. Brightness sensor. 147.7x74x16.4 mm. Operating from -10°C to +50°C. 4000 mA, 3,85V battery.

**Shipped with**: USB cable, hand strap, USB power adaptor, USB-C to USB type A female adaptor.

Processor	OS	Display	Barcode Reader	RFID Reader	Communication	IP rating / Drops	Weight
Qualcomm Snapdragon 625 Octo Core 2Ghz 64 bits	Android 9 GMS	HD 720 x 1280 300 Nits	1D/2D imager	-	4G LTE, Wifi a/b/g/n/ac, Bluetooth 4.1 GPS / GLONASS	IP65 / 1.2m MIL STD 810G	225g

Various accessories for retail. Long autonomy.  
 Whole range of accessories, compact, powerful, communication base.



USB / Ethernet  
desktop dock  
AT-CAE5SL01



Battery jacket 4000  
mA 3,8V  
AT-CAE5SL02



Pistol Grip  
AT-CAE5SL03



Holster belt clip  
CARP10010



4 slots desktop dock



Forearm support  
AT-CAE5SL09

# Rugged Smartphones and PDA - E Series

## E55



E55 Android 13. Microprocessor Mediatek Octa Core MT6765x Helio P35 2,3Ghz 64 bits, 4Gb RAM, 64 GbFlash. Display 5,5" Full HD 1080 x 2160 tactile capacitive multi touch, Gorilla Glass, 450 nits, 4GLTE, GPS, Wifi 802.11 a/b/ac/g/n/e/h/e/j/k/t/v/w, Bluetooth V 5.0 BLE, NFC, APN front 5 Mpixels and rear 13 Mpixels autofocus et flash, FIngerprint, Port micro SD, Connector USB-C and docking connector, IP68, 1,5m drops.

**Shipped with:** Battery pack 5000 mA USB-c cable, hand strap, USB power adaptor, LCD protection applied.

Processor	OS	Display	Barcode Reader	RFID Reader	Communication	IP rating / Drops	Weight
Mediatek Octa Core MT6765x Helio P35 2,3Ghz 64 bits	Android 13 GMS	Full HD 1080x2160 450 nits	1D/2D Imager standard SE4710 SR and LR N6803	HF 13,56MHz (NFC)	4GLTE, wifi a/b/g/n/ac, bluetooth 5.0, GPS	IP68 / 1,5m MIL-STD-810G	249g

Removable battery, light and thin, physical function keys.



Dock Station  
AT-CAE5501



4 slots charger  
AT-CAE5508



Battery pack 5 000mA  
AT-CAE5502



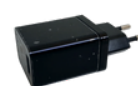
Handstrap  
AT-CAE5504



Pistol grip  
AT-CAE5506



Cigarette Light adapter  
3760310040031



Power adapter  
3760310040048

## E550RFID



Android 13, Mediatek Octa Core MT6762 2Ghz 64 bits, 4Gb RAM, 64 GbFlash Display 5,5" 720 x 1440 tactil capacitive multi touch, Gorilla Glass, 400 nits, 4GLTE, GPS, Wifi 802.11 a/b/ac/g/n, Bluetooth V 4,2 BLE, 5 Mpixels at the front and 13 Mpixels autofocus and flash at the back, micro SD, 2xSIM, 2xSAM, USB-C and dock connectors, IP65, 1,5m drops.

**Shipped with:** Battery pack (5200 mA for compact version & 7200mA for GUN version), USB-C cable, USB power supply.

Processor	OS	Display	Barcode Reader	RFID Reader	Communication	IP rating / Drops	Weight
MT6762Cortex A73 2,0GHzOctacore	Android 13	HD 720x1440 400 nits	1D/2DN57 03	LF: 125kHz 134kHz UHF: 26dbm (compact) UHF: 33dbm (GUN)	4GLTE, wifia/b/g/n/ac, bluetooth 4,2, GPS	IP65 / 1,5m MIL-STD-810G	500g

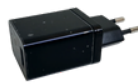
2 ergonomies dedicated for your RFID UHF and LF solutions.



Desk Dock  
AT-CAE550RFID01  
AT-CAE550RFID02 (GUN)



Battery  
AT-CAE550RFID03  
AT-CAE550RFID04 (GUN)



Power adapter



Cigarette light adpater  
3760310040031

## E65



Android 14, MTK dimensity 700 2,2 Ghz OctoCore, 8Go RAM, 128Go Flash, Display 6,5" 720x1600 450nits, 5G, Wifi 5, Bluetooth 5.3, GPS, NFC, Camera 13mpixels Autofocus flash at the back, webcam 5Mp, accelerometer, light captor, USB-C client, port μSD, swappable battery 5000 mA 3,8V, IP67, 1.5m drops.

**Shipped with:** Battery 5 000mA 3,8V, power supply, handstrap and LCD protection applied.

Processor	OS	Display	Barcode Reader	RFID Reader	Communication	IP rating / Drops	Weight
MTK Dimensity 7002,2 GHzOctocore	Android 14	6,5"HD 720X1600 450 nits	1D/2D SE4710	HF 13,56MHz (NFC)	5G, Wifi a/b/g/n/ac, BT 5,3, GPS	IP67/1,5m MIL-STD-810G	285g

Smartphone 5G, Android 14 , high performance rate, swappable battery.



Desk Dock  
AT-CAE6502



Battery 5000mA  
AT-CAE6503



Handstrap  
AT-CAE6503



Power adapter



Cigarette light adpater  
3760310040031



Holster belt clip  
AT-CAE606

# 6" and 8" Rugged Tablet - E Series

## E6C



4 GB RAM, 64 GB FlashROM, USB 2.0 client, micro SD, micro SIM. Rear camera 8 Mpx autofocus and front camera 2 Mpx. Accelerometer, brightness sensor. Gorilla Glass 3. 720x1280 pixels capacitive and multi-touch display. Micro USB and docking connector. 185x94x26mm. Operating from -10°C to 50°C.  
**Shipped with:** 5000 mA/3,7V battery pack, hand strap, USB power adapter.

Processor	OS	Display	Barcode Reader	RFID Reader	Communication	IP rating / Drops	Weight
Intel Atom Cherrytrail-T Z8350 Quad Core 1,92GHz	Windows 10	HD 720X1280 430 nits	1D/2D imager	HF 13,56MHz (NFC)	4G LTE, Wifi a/b/g/n Bluetooth 4.0, GPS	IP65 / 1.2m MIL STD 810G	380g

Windows 10 x64 in 6-inch tablet, removable battery, very rugged.

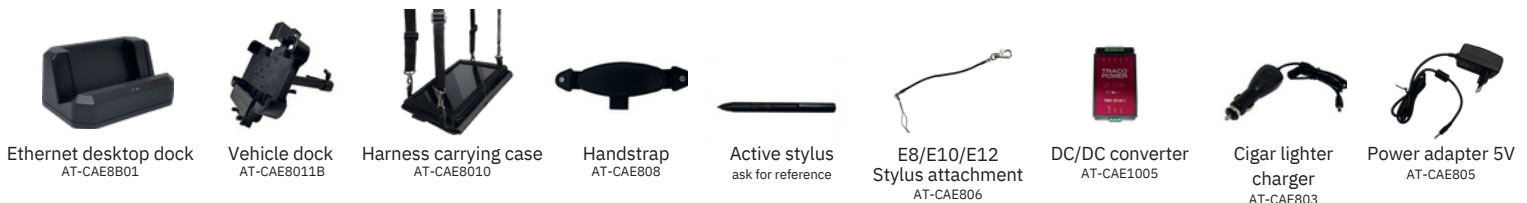


## E8B



Windows 10. 4 GB RAM, 128 GB EMMC. Brightness Sensor. Rear camera 5 Mpx autofocus and front camera 2 Mpx. Accelerometer. 2x USB 2.0, audio jack, mini HDMI, micro SD. 8300 mA 3,7V internal battery. 228x145x16.5mm. Operating from -10°C to 50°C.  
**Shipped with:** hand strap, micro USB cable, power supply.

Processor	OS	Display	Barcode Reader	RFID Reader	Communication	IP rating / Drops	Weight
Intel Atom Cherrytrail-T Z8350 Quad Core 1,92GHz	Windows 10	1280 x 800 400 Nits	1D/2D imager	HF 13,56MHz (NFC)	4G LTE, Wifi a/b/g/n Bluetooth 4.0, GPS	IP67 / 1.2m MIL STD 810G	710g



## E8E and E8T Gen2



8Go RAM et 128 Go ROM, écran 8", 1920 x 1200 Full HD tactile capacitif, 550 nits, GPS. Wifi 802.11 a/b/g/n/ac, Bluetooth, Camera avant 5 Mpixels et arrière 8 Mpixels autofocus, G sensor, capteur luminosité, 1 USB 3.0 type A, 1 USB-C, 1 USB 2 audio jack, micro HDMI, micro SD, batterie échangeable, IP65, 1,2m drops.

**Shipped with :** Battery 5000 mA, hand strap, Power supply, 1 USB cable, LCD protection.

Device	Processor	OS	Display	Barcode Reader	RFID Reader	Communication	IP rating / Drops	Weight
E8E	Intel JasperLake Celeron N5100 2,8Ghz	Windows 11 Linux	8" 1920 x 1200 Full HD tactile capacitif 550 nits	1D/2D	HF 13,56MHz (NFC)	4G LTE, wifi a/b/g/n/ac, BT 5 (BLE), GPS	IP65, 1,2m MIL-STD-810G	910g
E8T	Mediatek 8781 2,2GHz octocore	Android 12	8" 1920 x 1200 Full HD tactile capacitif 550 nits	1D/2D	HF 13,56MHz (NFC)	4G LTE, wifi a/b/g/n/ac, BT 5.2 (BLE), GPS	IP65, 1,2m MIL-STD-810G	910g

A powerful 8" with swappable battery.





# 10'' Rugged Tablets - E Series

## E10B



Windows 10. 4 GB RAM, 128 GB EMMC. Brightness sensor. Rear camera 5 Mpx autofocus and front camera 2 Mpx. Accelerometer. 2x USB 2.0, audio jack, mini HDMI, micro SD, SIM. RS232, RJ45. 10000 mA 3,7V internal removable battery. 280x187x22mm. Operating from -10°C to 50°C.

**Shipped with:** hand strap, micro USB cable, power supply.

Processor	OS	Display	Barcode Reader	RFID Reader	Communication	IP rating / Drops	Weight
Intel Atom Cherrytrail-T Z8350 Quad Core 1,92 Ghz	Windows 10	1920 x 1200 400 Nits	1D/2D imager	HF 13,56MHz (NFC)	4G LTE, Wifi a/b/g/n Bluetooth 4.1, GPS	IP65 / 1.2m MIL STD 810G	1210g

## E10BC



Windows. 8 GB RAM, 128 GB SSD. Brightness sensor. Rear camera 8 Mpx autofocus and front camera 2 Mpx. Accelerometer. USB 3.0, USB 2.0, audio jack, mini HDMI, micro SD, SIM. RS232, RJ45. 280x187x22mm. Operating from -10°C to 50°C.

**Shipped with:** 5000 mA 7,4V battery pack, hand strap, micro USB cable, power supply.

Processor	OS	Display	Barcode Reader	RFID Reader	Communication	IP rating / Drops	Weight
Core I5 Amberlake I5 8200Y 3,9 Ghz	Windows 10	1920 x 1200 400 Nits	1D/2D imager	N/A	4G LTE, Wifi a/b/g/n Bluetooth 4.2, GPS	IP65 / 1.2m MIL STD 810G	1210g

## E10AT



E10AT Windows 10 or 11 Atex Zone II. Intel JasperLake Celeron N5100 2,8Ghz, Screen 1920 x 1200 Full HD tactile capacitive, 400 nits, GPS. Wifi 802.11 a/b/g/n/ac, Bluetooth Rev 5.0.BLE, Camera front 5 Mpixels and rear 8 Mpixels autofocus, G sensor, light sensor, 1 USB 3.0 type A, 1 USB-C, audio jack, micro HDMI, micro SD. RJ45, removable battery 5000 mA 7,67V, IP65, 1,2m drops.

**Shipped with:** hand strap, Carry handle, Power supply, 1 USB cable, LCD protection.

Processor	OS	Display	Barcode Reader	RFID Reader	Communication	IP rating / Drops	Weight
Intel JasperLake Celeron N5100 2,8Ghz	Wind 10 /11	1920 x 1200 400 nits	through camera	HF 13,56MHz (NFC)	4GLTE, wifi a/b/g/n/ac, bluetooth 5.0, GPS	IP65 / 1,2m MIL-STD-810G ATEX (II)	1 140g

## E10T



4 Go RAM 64Go ROM Qualcomm SnapDragon 625 2Ghz OctoCore, Screen 1280 x 800 tactile capacitive and digitizer, 700 nits, GPS. Wifi 802.11 b/g/n/ac, Bluetooth Rev 4.0. Camera 13 Mpixels autofocus at the back and 2 Mpixels at the front, G sensor, light sensor, 1 USB 3.0, 1 USB-C 2,0, audio jack, micro HDMI, micro SD. RS232, RJ45, swappable battery 10000 mA 3,7V, IP65, 1m drops.

**Shipped with:** 10000 mA 3,7V battery pack, hand strap, protective screen installed, Carry handle, Power supply, 1 USB cable.

Processor	OS	Display	Barcode Reader	RFID Reader	Communication	IP rating / Drops	Weight
Qualcomm SnapDragon 625 2Ghz OctoCore	Android 10 GMS	1280 x 800 700 Nits	1D/2D imager	HF 13,56MHz (NFC)	4G LTE, Wifi a/b/g/n Bluetooth 4.0, GPS	IP65 / 1.2m MIL STD 810G	1210g

Rugged, ethernet port, RS232 port, communication and charging base. Possibility to have high-performance versions ( ICore 5).



E10/E12 Desktop dock  
AT-CAE1201  
AT-CAE1201K



E10B Vehicle dock with key lock, Ethernet, DC jack, 2 USB, RS232 DB9, kit fixation  
AT-CAE1011B  
AT-CAE1011B1



Additional removable battery  
AT-CAE1008  
AT-CAE1008K



Harness carrying case  
AT-CAE1013



Hand strap  
AT-CAE1006



Cigar lighter charger  
AT-CAE803



Power adapter  
AT-CAE805



DC/DC converter  
AT-CAE1005



Active stylus  
ask for reference



Stylus attachment  
AT-CAE806



VESA plate  
AT-CART8016

# 12'' Rugged Tablets - E Series

## E12T



Android 10 GMS. 4GoRAM, 64Go SSD, Qualcomm SnapDragon 625 2Ghz OctoCore, Screen 1920 x 1200 tactile 10 points capacitive, 300 nits, GPS. Wifi 802. 11 b/g/n/ac, Bluetooth Rev 4.2. Camera 13 Mpixels autofocus at the back and 5 Mpixels at the front, G sensor, 1 USB 3.0, 2 USB 2.0, audio jack, HDMI, micro SD. RS232, RJ45, swappable battery 12600 mA 3,7V, IP65, 1,2m drops.

**Shipped with:** hand strap, Carry handle, Power supply, 1 USB cable.

Processor	OS	Display	Barcode Reader	RFID Reader	Communication	IP rating / Drops	Weight
Qualcomm SnapDragon 625 2Ghz OctoCore	Android 10 GMS	1920 x 1200 300 Nits	1D/2D imager	HF 13,56MHz (NFC)	4G LTE, Wifi a/b/g/n Bluetooth 4.0, GPS	IP65 / 1.2m MIL STD 810G	1480g

Widescreen display, various accessories, RS232 and Ethernet port, high performance version (with Kabylake processor).



E10/E12 Ethernet desktop dock  
AT-CAE1201  
AT-CAE1201K



Additional removable battery  
AT-CAE1205  
AT-CAE1205K



Cigar lighter charger  
AT-CAE803



Hand strap  
AT-CAE1206



Harness strap  
AT-CAE1207B



Shoulder strap  
AT-CAE1207



Power adapter  
AT-CAE805  
AT-CAE1202



Removable QWERTY keyboard  
AT-CAE1210



DC/DC con verter  
AT-CAE1005



Stylus attachment  
AT-CAE806



Active stylus  
ask for reference



# Fix or vehicle mount terminals - E Series

## EVM8



4GBRAM/64Gb Flash, GPS, 8" display HD 800 x 1280 tactile capacitive, 700 nits, Wifi 802.11 a/b/g/n/ac, Bluetooth Rev 5.0, USB 3.0 Type A x1, 4GLTE, 1000M Ethernet (M12- 8 pin connector), 1 RS232 + 1 RS232/RS485 (M12 -12 pin connector), 2 x USB 2,0 + 1 CAN/CVBS (M12 -12 pin connector), input voltage 11-24V, IP65, operate temp -20°C to 60°C.

**Shipped with:** 8-pin power cable.

Processor	OS	Display	Barcode Reader	RFID Reader	Communication	IP rating / Drops	Weight
Intel Jasperlake N5100	Windows 10 / Linux	HD 800X1280 700 nits	N/A	Optional NXP300	4G LTE, Wifi a/b/g/n/ac Bluetooth 5.0, GPS	IP65 / 1.2m MIL STD 810G	620g

Possibility of having an optional internal battery to maintain the charge in the event of micro cuts.

## EVM8A



EVM8A Android 12. 4GBRAM/64Gb Flash, GPS, 8" display HD 800 x 1280 tactile capacitive, 700 nits, Wifi 802.11 a/b/g/n/ac, Bluetooth Rev 5.2, USB 2.0 Type A, 4GLTE, 1000M Ethernet (12 pin connector), 1 RS232 + 1 RS232/RS485 (12 pin connector), 1 USB 2,0 + 1 CAN/CVBS (12 pin connector), input voltage 11-24V, IP65, operate temp -20°C to 60°C.

**Shipped with:** Power cable 8 pin terminal port to DC with power supply, power cable direct to battery, Wifi /4GLTE/GPS antennas, ethernet cable, USB/CAN/CVBS Cable, RS232/485 cable.

Processor	OS	Display	Barcode Reader	RFID Reader	Communication	IP rating / Drops	Weight
ARM octo-core 2,2GHz	Android 12	HD 800x1280 700 nits	Through RS232 or USB	Through RS232 or USB	4GLTE, wifi a/b/g/n/ac, bluetooth 5.2, GPS	IP65 / 1,2m MIL-STD-810G	620g

Possibility of having an optional internal battery to maintain the charge in the event of micro cuts.

## EVM10



4GBRAM/64Gb Flash, GPS, 10" display HD 800 x 1280 tactile capacitive, 700 nits, Wifi 802.11 a/b/g/n/ac, Bluetooth Rev 5.0, USB 3.0 Type A x1, 4GLTE, 1000M Ethernet (M12-8 pin connector), 1 RS232 + 1 RS232/RS485 (M12-12 pin connector), 2 x USB 2,0 + 1 CAN/CVBS (M12-12 pin connector), input voltage 11-24V, IP65, operate temp -20°C to 60°C.

**Shipped with:** 8 pin power cable.

Processor	OS	Display	Barcode Reader	RFID Reader	Communication	IP rating / Drops	Weight
Intel Jasperlake N5100	Windows 10 / Linux	HD 800X1280 700 nits	N/A	Optional NXP300	4G LTE, Wifi a/b/g/n/ac Bluetooth 5.0, GPS	IP65 / 1.2m MIL STD 810G	830g

Possibility of having an optional internal battery to maintain the charge in the event of micro cuts.

## EVM10A

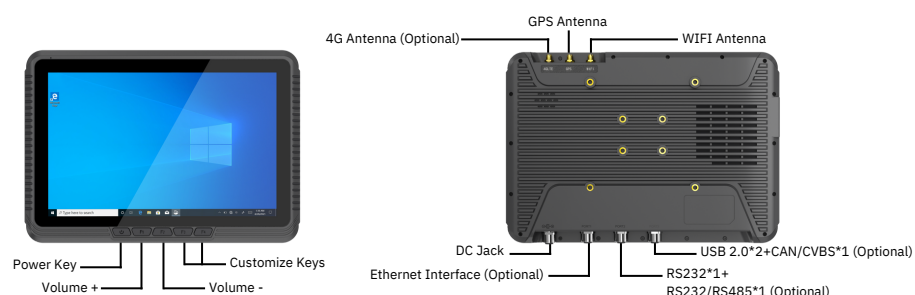


EVM10A Android 12. 4GBRAM/64Gb Flash, GPS, 10" display HD 800 x 1280 tactile capacitive, 700 nits, Wifi 802.11 a/b/g/n/ac, Bluetooth Rev 5.2, USB 2.0 Type A, 4GLTE, 1000M Ethernet (12 pin connector), 1 RS232 + 1 RS232/RS485 (12 pin connector), 1 USB 2,0 + 1 CAN/CVBS (12 pin connector), input voltage 11-24V, IP65, operate temp -20°C to 60°C.

**Shipped with:** Power cable 8 pin terminal port to DC with power supply, power cable direct to battery, Wifi /4GLTE/GPS antennas, ethernet cable, USB/CAN/CVBS Cable, RS232/485 cable.

Processor	OS	Display	Barcode Reader	RFID Reader	Communication	IP rating / Drops	Weight
ARM octo-core 2,2GHz	Android 12	HD 800x1280 700 nits	Through RS232 or USB	Through RS232 or USB	4GLTE, wifi a/b/g/n/ac, bluetooth 5.2, GPS	IP65 / 1,2m MIL-STD-810G	830g

Possibility of having an optional internal battery to maintain the charge in the event of micro cuts.





# Panel PC

## EPC15A



EPC15A Android 11. CPU Rockchip RK3568, 4GbRAM/64Gb Flash, 15,6" display Full HD 1920 x 1080 tactile capacitive, Wifi 802.11 b/g/n, Bluetooth Rev 4.0, USB 3.0 Type A, USB 3.0 OTG Type A, GPS, DC JAcK 12V, 1000M Ethernet 1 x RJ45, 2 x RS232 DB9, 1 x HDMI, 1 x mini PCIE extension slot, 3,5mm DC jack earphone.

**Shipped with:** Power cable and power supply, Wifi antenna, fixing grips.

Processor	OS	Display	Keys	Scanners	Communication	IP rating / Drops	Weight
Rockchip RK3568	Android 11 GMS	Full HD 1920 x 1080	Through RS232 or USB	Through RS232 or USB	wif a/b/g/n/ac, bluetooth 4.0, ethernet	IP65 front panel	2,4Kg

## EPC15



EPC15 Windows 11 Iot. CPU Intel Celeron Jasperlake N5100, 8GbRAM/128Gb SSD, 15,6" display Full HD 1920 x 1080 tactile capacitive, Wifi 802.11 ac, Bluetooth Rev 5.0, 1 x USB 3.0 Type A, 2 x USB 2 Type A, GPS, 4GLTE, DC JAcK 12V, 1000M Ethernet 2 x RJ45, 2 x RS232 DB9, 1 x HDMI, 1 x M2 extension slot, 3,5mm DC jack earphone.

**Shipped with:** Power cable and power supply, Wifi antenna, fixing grips.

Processor	OS	Display	Keys	Scanners	Communication	IP rating / Drops	Weight
Intel JasperLake Celeron N5100 2,8Ghz	Windows 11	Full HD 1920 x 1080	Through RS232 or USB	Through RS232 or USB	wif a/b/g/n/ac, bluetooth 5.0, ethernet	IP65 front panel	2,4Kg



# 5.5" Smartphones and 8" Rugged Tablets - R Series

## RT4500



3 Go RAM, 32 Go FlashROM. Rear camera 8 Mpx autofocus Capacitive multi-touch display. Gorilla Glass, micro SD, SIM, USB-C. Accelerometer. Brightness sensor. 235x80x36mm. Operating from -20°C to 50°C. **Shipped with:** 6000 mA 3,7V Lithium ION polymer battery pack, hand strap or gun, USB-C cable, power supply, bumper.

Processor	OS	Display	Barcode Reader	RFID Reader	Communication	IP rating / Drops	Weight
Mediatek MT6750T Cortex A53 Octo Core 1,5 GHz	Android 12 GMS	480x800 350 Nits	1D/2D imager 2D Long range	HF 13,56MHz (NFC)	4G LTE, Wifi a/b/g/n/ ac, Bluetooth 4.1, AGPS	IP67 / 1.8m MIL STD 810G	460g - 625g

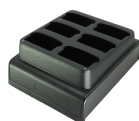
Removable battery, very rugged, built-in hand strap or gun, 2D long range barcode scanner, USB-C slot, variable type of keyboard.



Destock dock  
AT-CART450001



4 slots batteries charger  
AT-CART450005



6 slots battery charge  
AT-CART450006



6000 mA Battery  
AT-CART450003



Hand strap  
AT-CART450004



Power adapter  
AT-CART450002

## RT55



4 GB RAM, 64 GB FlashROM, 5100 mA Lithium ION polymer battery. Rear camera 13 Mpx autofocus and flash and front camera 8 Mpx. Capacitive multi-touch display. Gorilla Glass, micro SD, 1 slot SIM, USB-C client. Accelerometer. Brightness sensor. 175x83x20.5mm. Operating from -20°C to 50°C.

**Shipped with:** 5100 mA 3,7V battery, hand strap, USB-C cable, power supply, bumper.

Processor	OS	Display	Barcode Reader	RFID Reader	Communication	IP rating / Drops	Weight
MT6750T Cortex A53 Octo Core 1,5 GHz	Android 12 GMS	Full HD 1080 x 1920 400 Nits	1D/2D imager standard SE4710/SE4770  1D/2D imager SR and LR SE55	HF 13,56MHz (NFC)	4G LTE, Wifi a/b/g/n/ ac, Bluetooth 4.1, AGPS	IP67 / 1.5m MIL STD 810G	335g

Removable battery, very rugged, integrated hand strap, Full HD display, USB-C.



snap on RS232  
AT-CART5510



Destock dock  
AT-CART5501



4 slots batteries charger  
AT-CART5505



5100mA Battery  
AT-CART5502



Hand strap  
AT-CART5503



Power adapter  
AT-CART5507



Bumper  
AT-CART5506



For  
industrial use

# 8", 10" and 12" Rugged Tablets - R Series

## RT80



4 GB RAM, 128 GB SSD MLC. Rear camera 8 Mpx autofocus and front camera 2 Mpx. G-sensor. Brightness sensor. NFC. USB 2.0, USB 3.0, audio jack, micro HDMI, micro SD, SIM. 160 mA 3,7V internal battery. 232.6x150x22mm. Operating from -10°C to 50°C.

**Shipped with:** 11850 mA 3,8V hot-swappable battery pack, hand strap, carrying handle, stylus and stylus attachment, screen protection, power supply.

Device	Processor	OS	Display	Barcode Reader	RFID Reader	Communication	IP rating / Drops	Weight
RT80	Intel Atom Cherrytrail-T Z8550 2,4GHz Quad Core	Windows 10	1280 x 800 370 Nits	1D/2D imager	HF 13,56MHz (NFC)	4GLTE, Wifi a/b/g/n/ac, Bluetooth 4.1, GPS	IP65 / 1.5m MIL STD 810G	910g
RT80A	Rockchip RK3399 2GHz Hexa Core	Android 9 GMS	1280 x 800 470 Nits	1D/2D imager	HF 13,56MHz (NFC)	4GLTE, Wifi a/b/g/n/ac, Bluetooth 4.2, GPS	IP65 / 1.5m MIL STD 810G	910g

## RT80A



Android or Windows platform, hot-swappable battery, industrial accessories, extended connectivity, very rugged.

## RT101A



Android 12, Rockchip RK3399 2Ghz 6 Core, 4Go RAM, 64Go ROM, Display 1200 x 1920 tactile capacitive, 550 nits, GPS, Wifi 802.11 a/b/g/n/ac, Bluetooth Rev 4.2. Camera 8 Mpixels autofocus at the back and 2 Mpixels in front, Accelerometer, light sensor, NFC, micro USB 2.0, USB 3.0, audio jack, micro HDMI, micro SD, RJ45 Ethernet, Internal battery 160 mA 3,8V and swappable battery 10800 mA 3,8V, IP65, 1.5 m drops.

**Shipped with :** battery 10800 mA 3,8V, hand strap, power supply, stylus and attached stylus, carry handle.

Processor	OS	Display	Barcode Reader	RFID Reader	Communication	IP rating / Drops	Weight
Rockchip RK3399 2Ghz 6 Core	Android 12	10,1" full HD 1200x1920 550 nits	1D/2D	RFID 13,56MHz (NFC)	4G LTE, wifi a/b/g/n/ac, BT 4,2, GPS	IP65, 1,5m MIL-STD-810G	1300g

Android 12, hot swappable battery.



Desktop dock  
AT-CART12201  
AT-CART8001B

Vehicle dock  
AT-CART12202  
AT-CART101B01  
AT-CART8002B

Battery  
AT-CART12204  
AT-CART10102  
AT-CART8004

4 slots batteries charger  
AT-CART12210  
AT-CART8010

Harness carrying case  
AT-CART12205  
AT-CART10105  
AT-CART8017

Carrying handle  
AT-CART12206  
AT-CART8007

Hand strap  
AT-CART12205  
AT-CART10103  
AT-CART8006

Shoulder strap  
AT-CAE1207

Cigar lighter charger  
AT-CART8012

Capacitive stylus  
AT-CART8009

Active stylus RT122  
AT-CART12207

SNAP-ON  
AT-CART8005

VESA plate  
AT-CART8016

## RT110

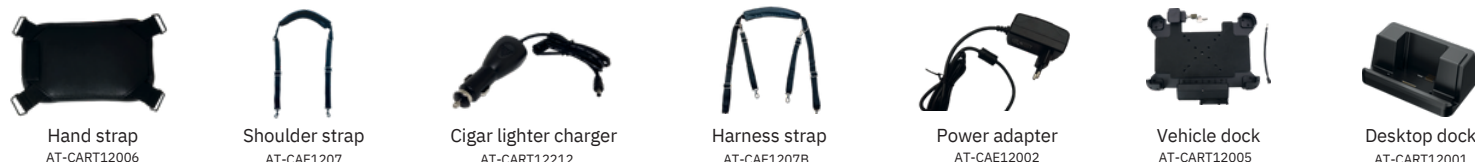


8GoRAM, 128Go SSD. GPS, 4GLTE, NFC. full HD 1920x1200px tactile capacitif, 700 nits, Wifi 802.11 a/b/g/n/ac, Bluetooth Rev 4.2. APN 8 Mpx autofocus at the back and 2 Mpx at the front. G-sensor. light captor. USB 3.0 and USB type C, audio jack, RJ45 Ethernet, mini HDMI, micro SD. hot swappable battery 5000 mA 7,4V (RT110) ou 6300 mA 7,4V (RT120). internal battery 860mA 7,4V. IP65. 1,2m drops.

**Livrée avec :** Battery, handstrap, carrying handle, pprotected screen applied, power supply.

Device	Processor	OS	Display	Barcode Reader	RFID Reader	Communication	IP rating / Drops	Weight
RT110	Intel Jasperlake N5105 and Core i5 1235U	Windows 10/11	1920 x 1200 700 Nits	1D/2D imager	HF 13,56MHz (NFC)	4GLTE, Wifi a/b/g/n/ac, Bluetooth 4.2, GPS	IP65 / 1.2m MIL STD 810G	1140g
RT120	Intel Jasperlake N5105, Core I5 1235U and Core i7 8550U	Windows 10/11	1920 x 1200 680 Nits	1D/2D imager	HF 13,56MHz (NFC)	4GLTE, Wifi a/b/g/n/ac, Bluetooth 4.2, GPS	IP65 / 1.2m MIL STD 810G	1955g

Hot swappable battery, industrial accessories, extended connectors, high performance with Core I7 processor.



Hand strap  
AT-CART12006

Shoulder strap  
AT-CAE1207

Cigar lighter charger  
AT-CART12212

Harness strap  
AT-CAE1207B

Power adapter  
AT-CAE12002

Vehicle dock  
AT-CART12005

Desktop dock  
AT-CART12001



# 14" and 15" Rugged Laptop - R Series

## RT14



14" Screen full HD 1920 x 1080 700 nits, TPM 2,0, High-Speed Wifi 6, Bluetooth Rev 4.2. GPS. Front camera 2 Mpixels, Fingerprint, light sensor, USB 2,0 Type-A x 1, USB 3.0 Type-A x3, SIM Card x 1, audio jack, RJ45 Ethernet x2, HDMI x 1, SD card x 1, RS232 DB9 x 1, 5PIN Pogo Pin x1, hot-swappable battery 6300 mA 7,4V, internal battery 1750mA 7,4V, IP65, 1.2m drops.

**Shipped with:** battery 6300 mA 7,6V, AZERTY or QWERTY keyboard, power supply.

Processor	OS	Display	Barcode Reader	RFID Reader	Communication	IP rating / Drops	Weight
iCore5 1135G7	Windows 10 or 11	HD 1080X1920 700 nits	No	NXP300 (Optional)	BT 5.1, Wi-Fi 6 802.11a,b,d,e,g,h,i, k,n,r,u,v,w,ac,ax 4G LTE (Optional)	IP65 / 1.2m MIL STD 810G	2850g

Possibility of having a touch screen and upgrade to 512 GB of SSD.

## RT15



15.6" Screen full HD 1920 x 1080 700 nits, TPM 2,0, High-Speed Wifi 6, Bluetooth Rev 5.1. GPS. Front camera 2 Mpixels, Fingerprint, light sensor, USB 2,0 Type-A x 1, USB 3.0 Type-A x 3, SIM Card x 1, audio jack, RJ45 Ethernet x2, HDMI x 1, SD card x 1, RS232 DB9 x 1, 5PIN Pogo Pin x1, hot-swappable battery 6300 mA 7,4V, internal battery 1750mA 7,4V, IP65, 1.2m drops.

**Shipped with:** battery 6300 mA 7,6V, AZERTY or QWERTY keyboard, power supply.

Processor	OS	Display	Barcode Reader	RFID Reader	Communication	IP rating / Drops	Weight
iCore5 1135G7	Windows 10 or 11	HD 1080X1920 700 nits	No	NXP300 (Optional)	BT 5.1, Wi-Fi 6 802.11a,b,d,e,g,h,i, k,n,r,u,v,w,ac,ax 4G LTE (Optional)	IP65 / 1.2m MIL STD 810G	3300g

Possibility to upgrade to 512 GB of SSD.



# Software tools

Depending on the product and operating system you selected, you can have access to software tools that make it easier to use, deploy, and remotely monitor the device.

## Kiosk mode

This software is mainly designed to lock the system. Users limited access to device features within the scope of their software application.



## RFID reader emulator

This software tool retrieves, in the active input area, the read RFID tag code. It runs as background service after launch.

## Software development toolkit (SDK)

Athesi provides a software development kit which gives to developers the possibility to manage directly some features like barcode scanner, RFID reader, smart card or magnetic card reader, 3D camera for the optimization and the customization of the software.



## Auto Setup

This feature allows applications to be installed and configured automatically and to be repeated on several terminals in an efficient way.

## Auto Test

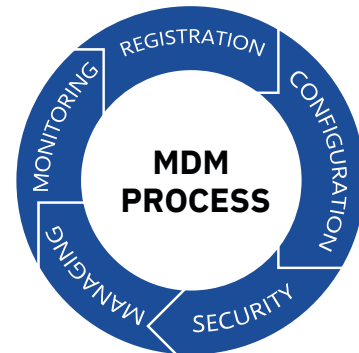
This integrated software tool is quite interesting for the first level of diagnostic. It allows testing one by one the hardware functionalities and to check if each function is working properly (Wi-Fi, barcodes, RFID, Display, Sensor...)



## Mobile Device Management (MDM)

Athesi regularly gets its devices approved by various editors according to customer demand and requirements. MDMs are powerful and complete tools for remote administration and device monitoring.

Athesi clients use different MDMs on the market such as Springdel, SOTI, Telelogos, TinyMDM, Microsoft, ...



## Barcode reader emulator

This software tool retrieves, in the active input area, the read and decoded barcode. It runs as background service after launch.

## Terminal Emulation software

To better and easily use Athesi devices in specific environment, it is possible to use a terminal like an emulator TNVT for example. For information, Athesi hardware is approved to work with IVANTI's Velocity emulators.



# At a glance

X = Default      ● = Athesi Professional      ● = E Series  
O = Optional      ○ = R Series  
- = Not available

Device	Display	Nits	Android	Windows	Removable battery	1D/2D Scanner	RFID NFC	4G/5G	GSM Voice	Fingerprint reader	ATEX	Drop (m)	IP	Weight (g)	Desktop dock	Vehicle dock
E40	4.0	300	11	-	X	O	-	4G	-	-	-	1.2	65	250	-	-
RT4500	4.5	350	12	-	X	X	-	4G	-	-	-	1.8	67	460 625	X	-
E50AT	5	500	11	-	X	-	HF (NFC)	4G	X	-	X	1,5	67	531	-	-
AP5501	5.5	450	13	-	-	-	HF (NFC)	4G	X	-	-	1,5	68&69K	234	-	X
E55	5.5	450	13	-	X	O	HF (NFC)	4G	X	X	-	1.5	68	249	-	-
E55ORFID	5.5	400	13	-	X	O	BF et UHF	4G	X	-	-	1.5	65	500	X	-
RT55	5.5	400	12	-	X	O	HF (NFC)	4G	X	-	-	1.5	67	335	X	-
AP5706	5.7	400	11	-	-	-	X	4G	X	X	-	1.5	68 & 69K	325	-	-
AP5705S	5.7	540	12 AER	-	-	-	X	4G	X	X	-	1.5	68	275	x	-
E6C	6	430	-	10	X	O	HF (NFC)	4G	-	-	-	1.2	65	380	X	-
E65	6.5	450	14	-	X	O	HF (NFC)	5G	X	-	-	1.5	67	285	X	-
E8B	8	400	-	10	-	O	HF (NFC)	4G	-	-	-	1.2	67	710	X	X
E8E	8	550	-	11 / 10Linux	X	O	HF (NFC)	4G	-	-	-	1.2	65	910	X	X
E8T Gen2	8	550	12	-	X	O	HF (NFC)	4G	X	-	-	1.2	67	910	X	X
EVM8	8	700	-	11 / 10Linux	-	-	O	4G	-	-	-	1.2	65	620	-	-
EVM8A	8	700	12	-	-	-	HF (NFC)	4G	-	-	-	1,2	65	620	-	-
RT80	8	370	-	10	X hot swap	O	HF (NFC)	4G	-	O	-	1.5	65	910	X	X
RT80A	8	470	9	-	X hot swap	O	HF (NFC)	4G	-	O	-	1.5	65	910	X	X
AP8001TL	8	450	10	-	-	X	X	4G	X	-	-	1.2	67	650	-	-
AP8001CL	8	450	-	10	-	X	X	4G	-	-	-	1.2	67	650	-	-
EVM10	10	700	-	11 / 10Linux	-	-	O	4G	-	-	-	1.2	65	830	-	-
EVM10A	10,1	700	12	-	-	-	HF (NFC)	4G	-	-	-	1,2	65	830	-	-
E10B	10.1	400	-	10	-	O	HF (NFC)	4G	-	-	-	1.2	65	1210	X	X
E10T	10.1	700	10	-	X	O	HF (NFC)	4G	X	-	-	1.2	65	1210	X	X
E10AT	10,1	400	-	11	X	-	HF (NFC)	4G	-	-	X	1,2	65	1 140	-	-
E10BC	10.1	400	-	10	X	O	HF (NFC)	4G	-	-	-	1.2	65	1210	X	X
RT101A	10.1	550	12	-	X hot swap	O	HF (NFC)	4G	X	-	-	1.5	65	1300	X	X
RT110	10.1	700	-	11 / 10	X hot swap	O	HF (NFC)	4G	-	O	-	1.2	65	1140	X	X
AP1001TL	10.1	400	10	-	-	X	X	4G	X	-	-	1.2	65	920	-	-
AP1001CL	10.1	450	-	10	-	X	X	4G	-	-	-	1.2	65	920	-	-
AP1002TL	10.1	400	11	-	X	X	X	5G	X	-	-	1.2	65	650	X	-
AP1002CL	10,1	400	-	11	-	o	HF (NFC)	4G	-	-	-	1,2	65	650	X	-
E12T	12.2	300	10	-	X	O	HF (NFC)	4G	-	-	-	1.2	65	1480	X	X
RT120	12.2	680	-	11 / 10	X hot swap	O	HF (NFC)	4G	-	O	-	1.2	65	1955	X	X
RT14	14	700	-	11 / 10	X hot swap	-	O	4G	-	X	-	1.2	65	2850	X	-
EPC15	15,6	450	-	11	-	-	-	4G	-	-	-	-	65	2 400	-	-
EPC15A	15,6	450	11	-	-	-	-	4G	-	-	-	-	65	2 400	-	-
RT15	15.6	700	-	11 / 10	X hot swap	-	O	4G	-	X	-	1.2	65	3300	X	-

# Athesi

Smartphones & Tablets

A french brand

31 rue des Clotais  
94360 Bry-sur-Marne  
France

+33 1 83 64 57 40

[info@athesi.com](mailto:info@athesi.com)

[www.athesi.com](http://www.athesi.com)

 Athesi



Distributed by :